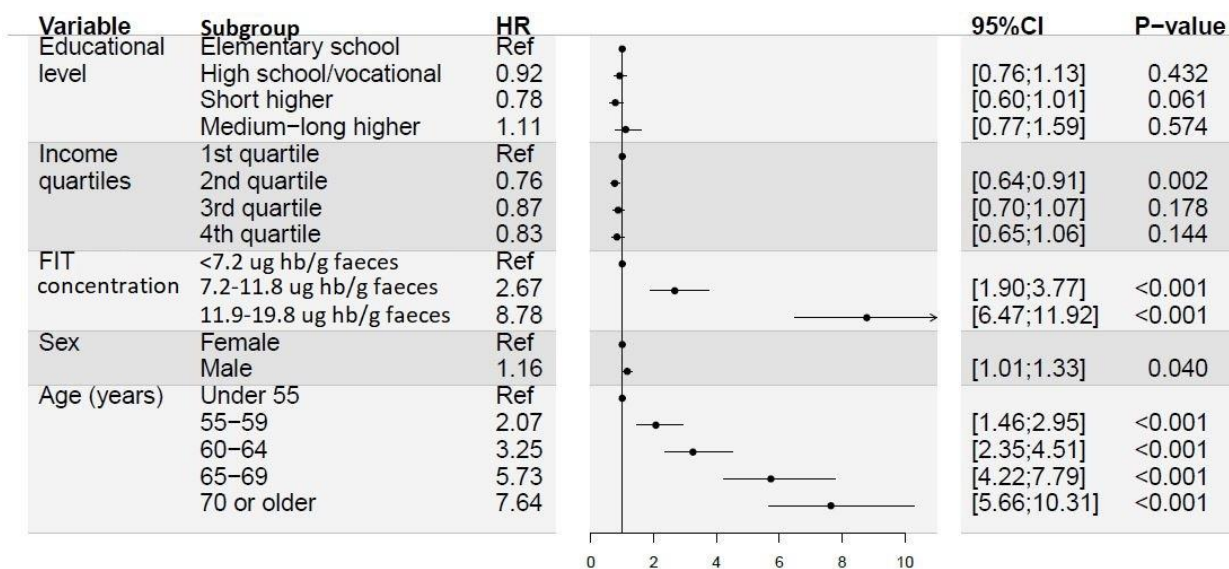


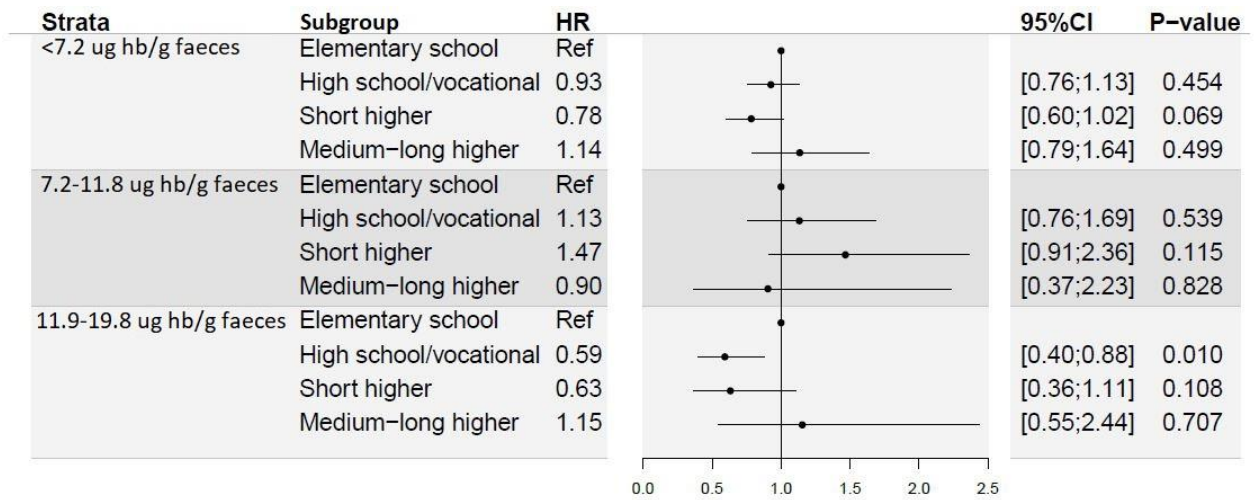
## Appendix A – Sensitivity analyses

**Fig. A1:** Risk of interval colorectal cancer based on socioeconomic characteristics and covariates from adjusted cox proportional hazards regression model including interaction term for educational level and FIT concentration in the model



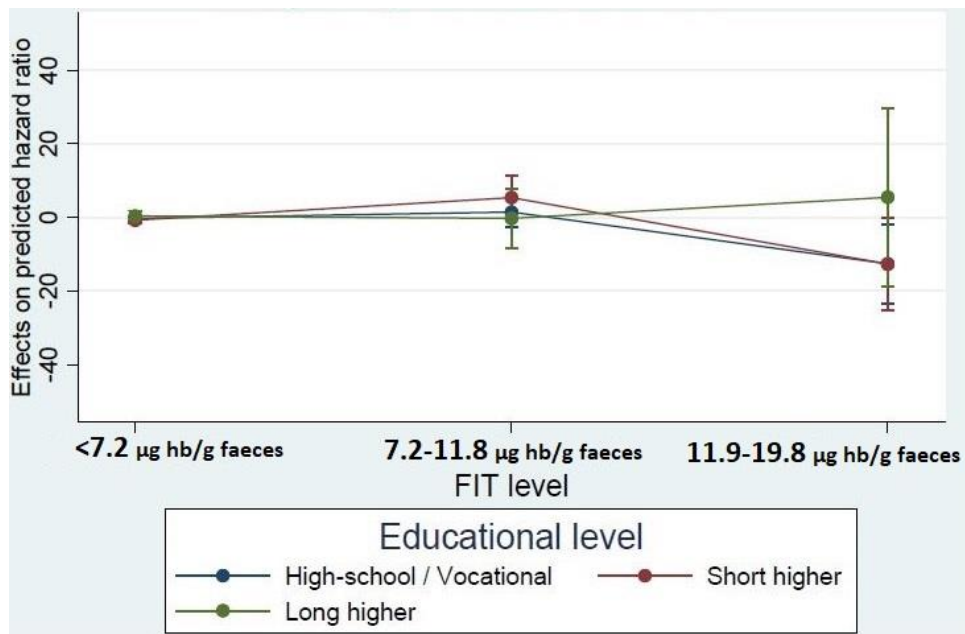
Abbreviations: FIT, Faecal immunochemical test; hb, haemoglobin

**Fig. A2:** Risk of interval colorectal cancer based on educational level from adjusted cox proportional hazards regression model stratified by FIT concentration



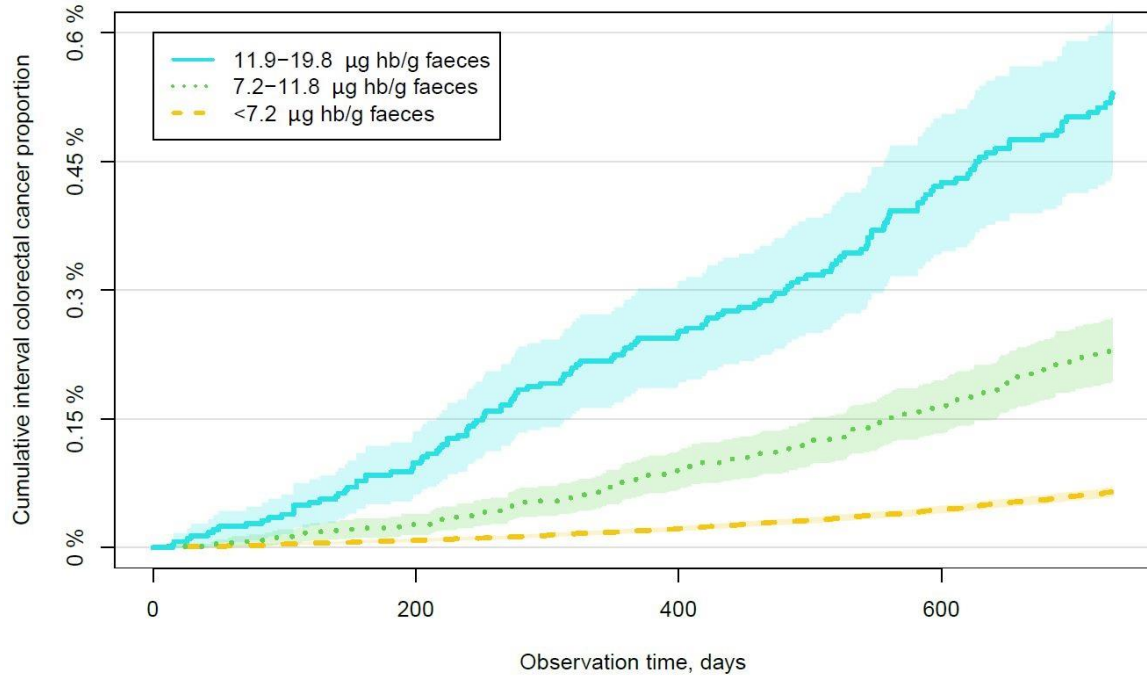
Abbreviations: FIT, Faecal immunochemical test; hb, haemoglobin

**Fig. A3:** Average marginal effects including 95% confidence intervals for the effect of educational levels on predicted hazard ratios for FIT concentrations with elementary school as reference

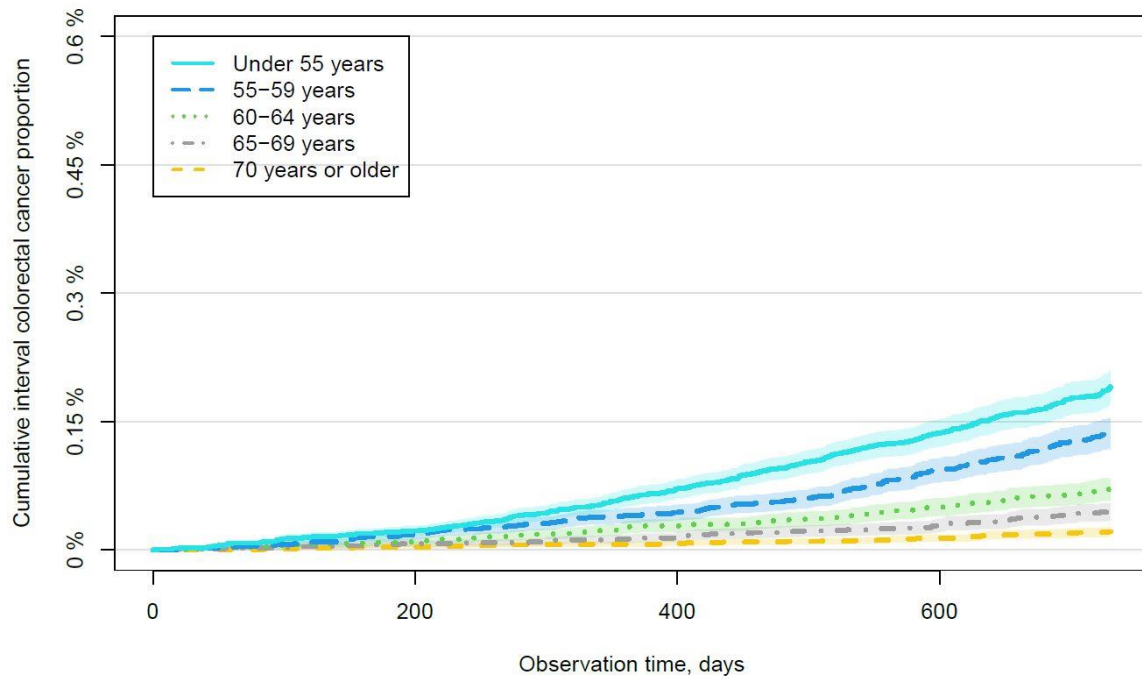


Abbreviations: FIT, Faecal immunochemical test; hb, haemoglobin

**Fig. A4:** Cumulative incidence proportion curves of interval colorectal cancer stratified by faecal haemoglobin concentration.



Abbreviations: FIT, Faecal immunochemical test.

**Fig. A5:** Cumulative incidence proportion curves of interval colorectal cancer stratified by age group.

Abbreviations: FIT, Faecal immunochemical test.