

Supplementary material

Table 1 Main Primary Cause for Inpatient Hospital Admissions by Cirrhotic Status

ICD10 Code	Description	N
All Patients		
C220	Malignant neoplasm of liver and intrahepatic bile ducts - Liver Cell Carcinoma	21,504
R18X	Ascites	2,618
C229	Malignant neoplasm of liver and intrahepatic bile ducts - Liver, unspecified	2,321
N185	Chronic kidney disease, stage 5	1,883
K746	Other and unspecified cirrhosis of the liver	1,855
K703	Alcoholic cirrhosis of the liver	1,760
E831	Disorders of iron metabolism	1,524
I859	Oesophageal varices without bleeding	1,368
K769	Liver disease, unspecified	1,093
D649	Anaemia, unspecified	905
Non-Cirrhotic and Unknown cirrhosis status		
C220	Malignant neoplasm of liver and intrahepatic bile ducts - Liver Cell Carcinoma	10,050
C229	Malignant neoplasm of liver and intrahepatic bile ducts - Liver, unspecified	1,303
E831	Disorders of iron metabolism	719
K769	Liver disease, unspecified	643
N185	Chronic kidney disease, stage 5	498
D649	Anaemia, unspecified	406
C787	Secondary malignant neoplasm of liver and intrahepatic bile duct	364
N390	Urinary tract infection, site not specified	329
J181	Lobar pneumonia, unspecified	313
R69X	Unknown and unspecified causes of morbidity	306

Compensated cirrhotic		
C220	Malignant neoplasm of liver and intrahepatic bile ducts - Liver Cell Carcinoma	7,621
N185	Chronic kidney disease, stage 5	959
E831	Disorders of iron metabolism	730
K746	Other and unspecified cirrhosis of the liver	659
I859	Oesophageal varices without bleeding	618
C229	Malignant neoplasm of liver and intrahepatic bile ducts - Liver, unspecified	580
K703	Alcoholic cirrhosis of the liver	400
R18X	Ascites	346
D649	Anaemia, unspecified	304
K769	Liver disease, unspecified	300
Decompensated cirrhotic		
C220	Malignant neoplasm of liver and intrahepatic bile ducts - Liver Cell Carcinoma	3,741
R18X	Ascites	1,809
K703	Alcoholic cirrhosis of the liver	1,308
K746	Other and unspecified cirrhosis of the liver	1,051
I859	Oesophageal varices without bleeding	610
N185	Chronic kidney disease, stage 5	426
C229	Malignant neoplasm of liver and intrahepatic bile ducts - Liver, unspecified	416
K704	Alcoholic hepatic failure	295
K729	Hepatic failure, unspecified	282
K920	Haematemesis	262

Table 2 Organ transplant costs for donor and organ retrieval 2013/14 prices

Resource Use	Mean (SD)	Median	IQR
Total initial assessment costs	£392 (£6)	£393	£391 - £395
Total drug costs	£11 (£10)	£17	£0 - £17

Total donor's hospital costs	£403 (£12)	£408	£395 - £412
Lung retrieval			
Total DCD donor equipment	£25 (£4)	£21	£21 - £29
Total DBD donor equipment	£273 (£3)	£274	£274 - £274
Total staff time costs	£1,005 (£0)	£1,005	£1,005 - £1,005
Total test costs	£21 (£9)	£25	£25 - £25
Total perfusion costs	£632 (£142)	£655	£655 - £655
Total travelling costs	£6,770 (£0)	£6,700	£6,770 - £6,770
Total lung retrieval costs	£8,651 (£170)	£8,729	£8,695 - £8,729

DCD – DONATION AFTER CIRCULATORY DEATH; DBD – BRAIN DEATH

Table 3 Unit costs of high-cost drugs (NHS drug tariff¹ and BNF²)

	N	Price per pack	Unit cost
Ciclosporin			
100mg capsules	30	£68.28	£2.28
10mg capsules	60	£18.25	£0.30
25mg capsules	30	£18.37	£0.61
50mg capsules	30	£35.97	£1.20
Mycophenolate mofetil			
250mg capsules	100	£27.12	£0.27
500mg tablets	50	£6.16	£0.12
Sorafenib			
200mg tablets	112	£3,576.56	£31.93
Tacrolimus			
500mcg	50	£61.88	£1.24
1mg	50	£71.59	£1.43
3mg	50	£214.76	£4.30
5mg	50	£266.92	£5.34

Table 4 Calculated daily cost for ciclosporin for year one and subsequent years

	Mg/kg/day	Mg/day	Dose costed	Cost per day
Month 1	12.5	965	960	£21.99

Month 2	11.8	910	910	£20.79
Month 3	11.1	856	850	£19.41
Month 4	10.4	801	800	£18.21
Month 5	9.7	746	750	£17.13
Month 6	9.0	692	700	£15.93
Month 7	8.3	637	650	£14.86
Month 8	7.5	582	600	£13.66
Month 9	6.8	528	525	£11.99
Month 10	6.1	473	475	£10.92
Month 11	5.4	418	420	£9.71
Month 12	4.7	363	350	£8.03
Subsequent years	4.0	309	310	£7.13

Table 5 Calculated daily cost for Tacrolimus for year one and subsequent years

	Mg/kg/day	Mg/day	Dose costed	Cost per day
Month 1	0.15	11.58	12.00	£13.54
Month 2	0.142	10.99	11.00	£12.11
Month 3	0.135	10.40	10.00	£10.68
Month 4	0.127	9.80	10.00	£10.68
Month 5	0.119	9.21	9.00	£11.07
Month 6	0.112	8.62	9.00	£11.07
Month 7	0.104	8.03	8.00	£9.63
Month 8	0.096	7.44	7.00	£8.20
Month 9	0.089	6.85	7.00	£8.20
Month 10	0.081	6.25	6.00	£6.77
Month 11	0.073	5.66	6.00	£6.77
Month 12	0.066	5.07	5.00	£5.34
Subsequent years	0.058	4.48	4.00	£5.73

Table 6 Calculated daily cost for mycophenolate mofetil for year one and subsequent years

	g/day	Cost per day

Month 1	1.4	£0.37
Month 2	1.4	£0.37
Month 3	1.4	£0.37
Month 4	1.4	£0.37
Month 5	1.3	£0.52
Month 6	1.3	£0.52
Month 7	1.3	£0.52
Month 8	1.3	£0.52
Month 9	1.3	£0.52
Month 10	1.3	£0.52
Month 11	1.2	£0.52
Month 12	1.2	£0.52
Subsequent years	1.2	£0.52

Table 7 Treatments included in "Other" category

Anti-Cancer Drug Regimen (Other)
CABOZANTINIB
CAPECITABINE
Cisplatin
CISPLATIN + FLUOROURACIL
CISPLATIN + FLUOROURACIL + RT
CISPLATIN + GEMCITABINE
Epirubicin
Gemcitabine/Carboplatin
Immunotherapy
Nintedanib
Oxaliplatin
Unknown

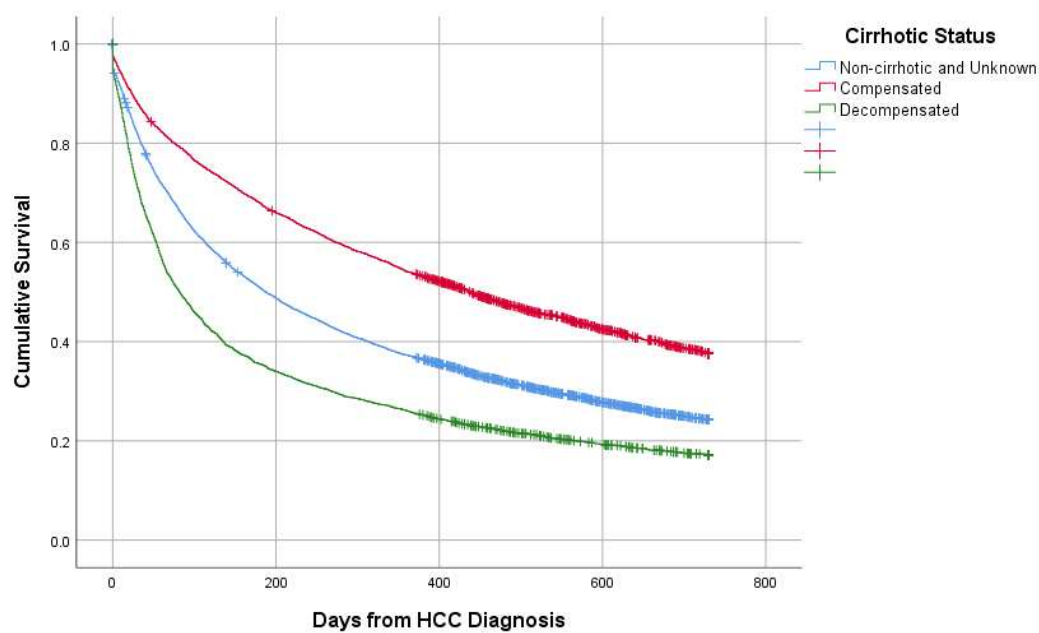


Figure 1 Survival Status at two years by Cirrhotic Status

¹ NHS Business Services Authority. Drug Tariff (April 2020) <https://www.nhsbsa.nhs.uk/pharmacies-gp-practices-and-appliance-contractors/drug-tariff>

² British National Formulary. 11th March 2020 <https://bnf.nice.org.uk/>