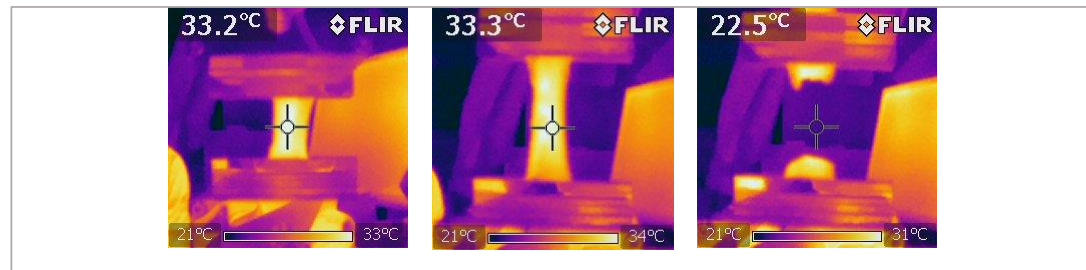


Appendix 2- Porcine liver parenchyma tissue tests (Appendix figure 2)

Infrared images showing the temperature of the specimen during tests (T9). Temperature recorded in top left corner of each image displays the temperature within the circle of the crosshairs only.

**Porcine parenchyma specimen uniaxial extension test parameters**

Ambient temperature	24°C							
Ambient humidity	37%							
Specimen temperature degrees (°C)		Specimen thickness (mm)				Thermal image ref.		
T1	32.7	T6	33.1	T1	6.2	T6	7.6	T2 thermal image 1491-149
T2	34	T7	31.7	T2	7	T7	5.7	T4 thermal image 1493-1496
T3	33.5	T8	32.8	T3	7	T8	6.1	T6 thermal image 1497-1499
T4	33.2	T9	33.3	T4	6.1	T9	9	T7 thermal image 1500-1503
T5	32.3	T10	32.2	T5	6	T10	5.7	T8 thermal image 1504-1507
Specimen weight								T10 thermal image 1507-1512
T1	15.2g	T6	22g					
T2	24.9g	T7	25.5g					
T3	16.8g	T8	25g					
T4	24.15g	T9	23.4g					
T5	26g	T10	22g					