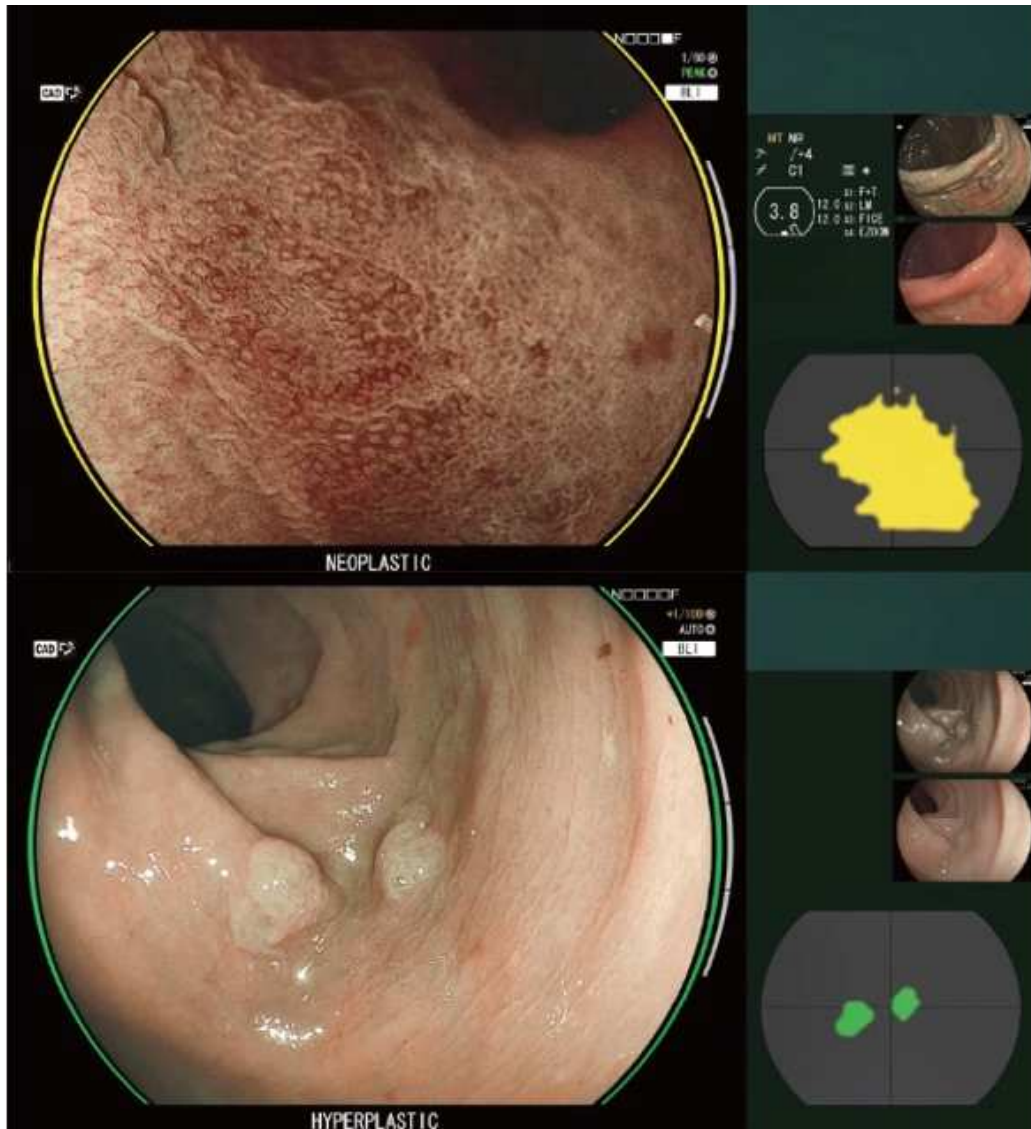
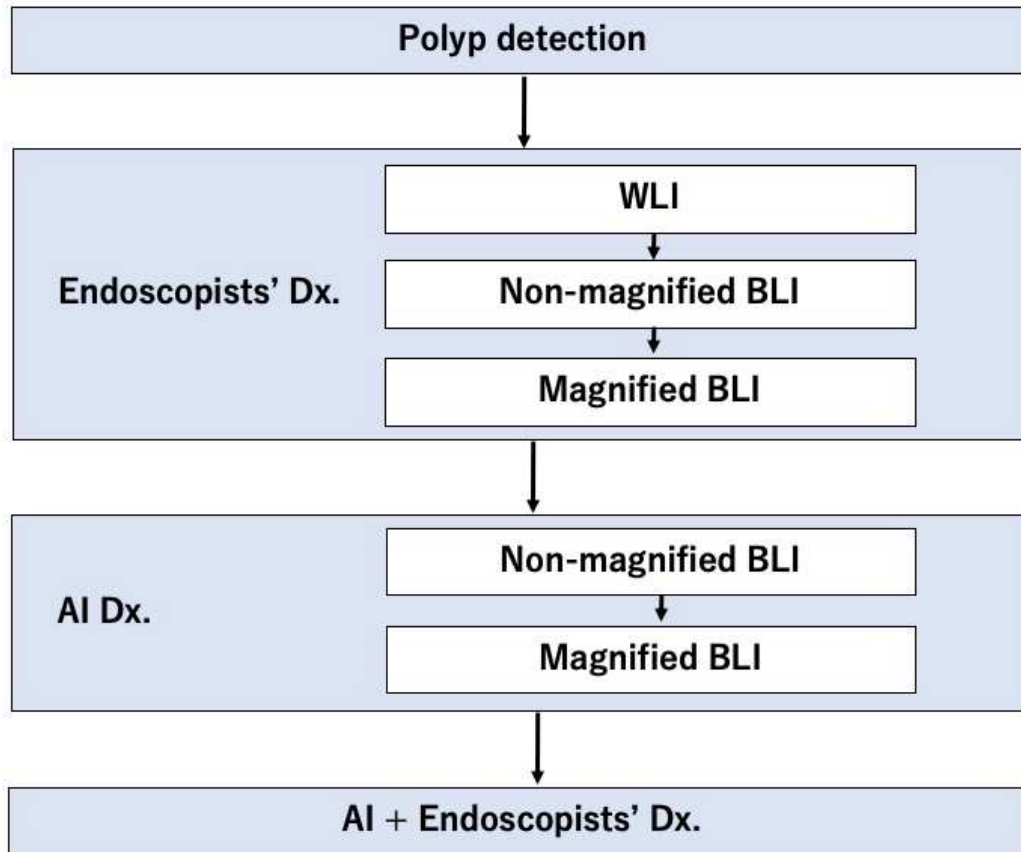


Supplemental Figure 1.**Supplemental Figure Legends**

Supplemental Figure 1. Endoscopic images of CAD EYE. a) An endoscopic image of a neoplastic polyp diagnosed by CAD EYE. The region of interest is the yellow area in the lower right corner of the screen. b) An endoscopic image of a hyperplastic polyp

diagnosed by CAD EYE. The region of interest is the green area in the lower right corner of the screen.

Supplemental Figure 2.**Supplemental Figure Legends**

Supplemental Figure 2. Study procedures. AI, artificial intelligence; BLI, blue light imaging; Dx, diagnosis; WLI, white light imaging.

Supplemental Table 1. Endoscopic and pathological diagnoses of the detected lesions.

AI, artificial intelligence; BLI, blue light imaging; WLI, white light imaging.

	Neoplastic	Hyperplastic	Non-epithelial tumor	Inflammatory polyps/normal mucosa	No response
Endoscopist diagnosis by WLI	294 (77.4%)	85 (22.4%)	1 (0.3%)		
Endoscopist diagnosis by BLI without magnification	302 (79.5%)	77 (20.2%)	1 (0.3%)		
Endoscopist diagnosis by BLI with magnification	307 (80.8%)	72 (18.9%)	1 (0.3%)		
AI diagnosis without magnification	278 (73.2%)	94 (24.7%)			8 (2.1%)
AI diagnosis with magnification	299 (78.7%)	80 (21.1%)			1 (0.3%)
AI + endoscopist diagnosis	304 (80%)	74 (19.4%)	2 (0.5%)		
Pathological diagnosis	300 (78.9%)	59 (15.5%)		21 (5.5%)	